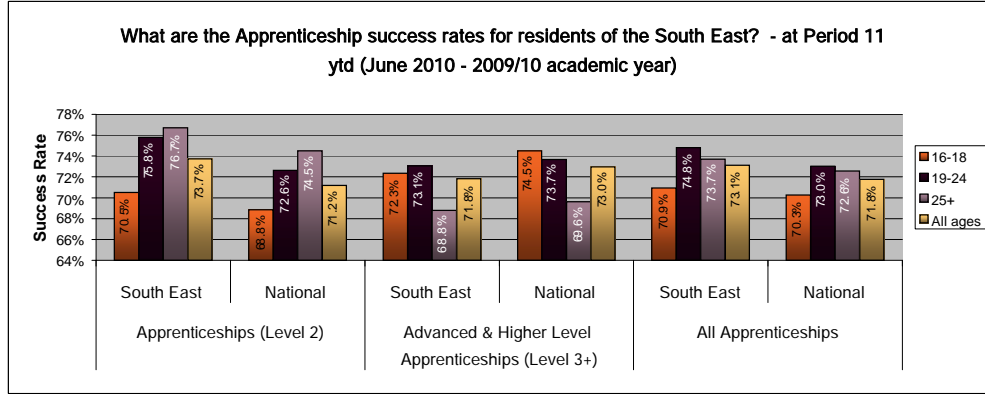
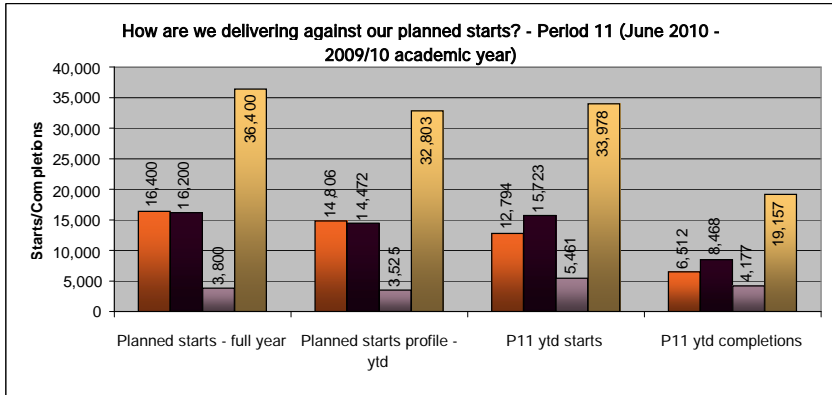


South East and National Apprenticeship Service summary report - Period 11 (June 2010 - 2009/10 academic year) - EXTERNAL



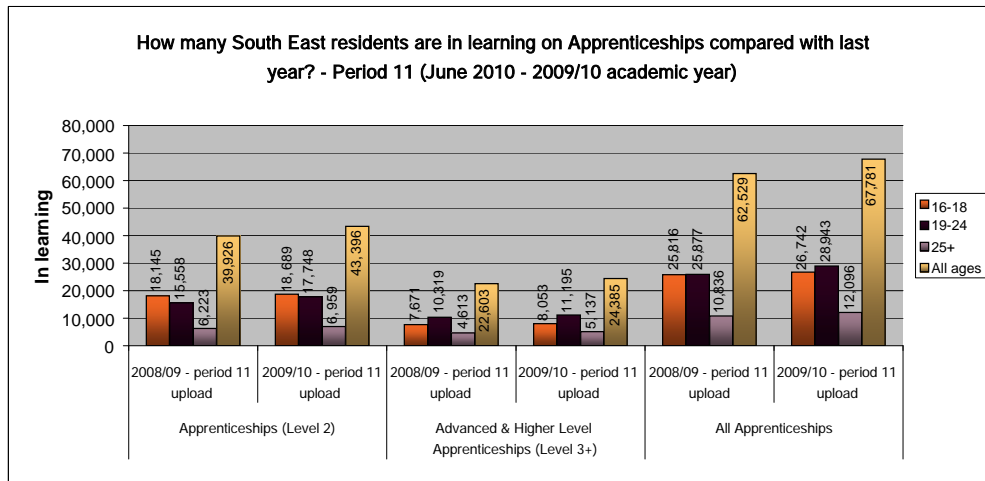
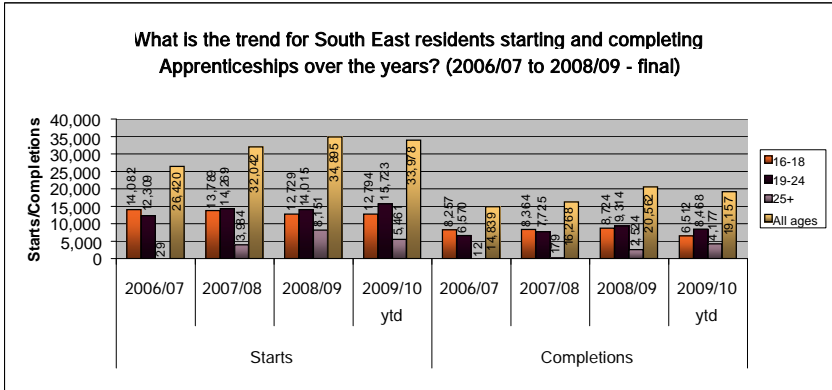
Age band	Planned Starts - ytd	Planned Starts profile - ytd	P11 ytd starts	% Delivery towards ytd Starts profile	towards full year Planned Starts	P11 ytd completions	Upload 11 starts 0809	0809/10 0910 change
16-18	16,400	14,806	12,794	86.4%	78.0%	6,512	11,492	11.3%
19-24	16,200	14,472	15,723	108.6%	97.1%	8,468	12,520	25.6%
25+	3,800	3,525	5,461	154.9%	143.7%	4,177	7,561	-27.8%
All ages	36,400	32,803	33,978	103.6%	93.3%	19,157	31,573	7.6%

NB South East figures are based on provision delivered within the South East. This is in line with how success rate data is cut at a regional level for 08/09. Final period 15 success rates for 2008/09 showing - there is currently no success data available for 09/10

- Level 2 Apprenticeships are 1.7%, 3.2% & 2.2% higher for 16-18, 19-24 & 25+ respectively in the South East than the National average.
- Level 3 Apprenticeships are 2.2%, 0.6% & 0.8% lower for 16-18, 19-24 & 25+ respectively in the South East than the National average.
- When looking at the overall success rate for all levels the South East exceeds the National average for each age band

NB Totals are year to date and are based on learners resident within the South East. There is no completions target for 09/10

- 16-18 starts are 11.3% (+1,302) higher at period 11 this year compared to the same upload period last year
- 16-18 starts are at 86.4% of the profiled P11 starts target
- 19-24 starts are 25.6% higher at period 11 (3,203) compared to the same upload period last year



Starts for those aged 16-18 have fallen by 7.7% between 2007/08 (13,793) and 2008/09 (12,729 - final data).

- There has also been a reduction in adults aged 19-24 starting an Apprenticeship, within the same period, down by 2.1%. There has been significant demand for 25+ Apprenticeships with a 104.4% (+4,164) increase in starts from 2007/08 (3,987) to 2008/09 (8,151)
- The overall completion rate has increased year on year by 38.6% from 14,839 in 2006/07 to 20,562 in 2008/09
- Figures for 2009/10 have been added but are not yet final for a full comparison. Comparisons still made with 2006/07 to 2008/09

- There are 8.4% (+5,252) more South East resident learners in learning on Apprenticeships at period 11 in 2009/10 than the same period in 2008/09.
- 19-24 has risen by 11.8% (+3,066) & 25+ by 11.6% (+1,260)
- 16-18 year olds in learning on all Apprenticeships at period 11 has increased by 3.6% (+926).
- This measure the total number of people who have been in learning at any time during the academic year - they may now have left

South East and National Apprenticeship Service summary report - Period 11 (June 2010 - 2009/10 academic year) - EXTERNAL

Local authority resident Apprenticeship starts and completions - Period 11 (June 2010 - 2009/10 academic year)

Local Authority	16 to 18			19 to 24			25+			All ages		
	2009/10 P11 ytd	2008/09 P11	0809 to 0910 % change	2009/10 P11 ytd	2008/09 P11	0809 to 0910 % change	2009/10 P11 ytd	2008/09 P11	0809 to 0910 % change	2009/10 P11 ytd	2008/09 P11	0809 to 0910 % change
Bracknell Forest	176	156	↑ 12.8%	211	139	↑ 51.8%	73	118	↓ -38.1%	460	413	↑ 11.4%
Brighton and Hove	230	232	↓ -0.9%	367	277	↑ 32.5%	113	196	↓ -42.3%	710	705	↑ 0.7%
Buckinghamshire	789	672	↑ 17.4%	804	648	↑ 24.1%	202	296	↓ -31.8%	1,795	1616	↑ 11.1%
East Sussex	748	678	↑ 10.3%	714	728	↓ -1.9%	233	402	↓ -42.0%	1,695	1808	↓ -6.3%
Hampshire	2,689	2471	↑ 8.8%	3,906	2972	↑ 31.4%	1,306	1574	↓ -17.0%	7,901	7017	↑ 12.6%
Isle of Wight	272	279	↓ -2.5%	368	303	↑ 21.5%	57	207	↓ -72.5%	697	789	↓ -11.7%
Kent	1,803	1624	↑ 11.0%	1,797	1369	↑ 31.3%	730	896	↓ -18.5%	4,330	3889	↑ 11.3%
Medway	508	384	↑ 32.3%	633	452	↑ 40.0%	186	242	↓ -23.1%	1,327	1078	↑ 23.1%
Milton Keynes	368	406	↓ -9.4%	400	346	↑ 15.6%	150	251	↓ -40.2%	918	1003	↓ -8.5%
Oxfordshire	921	827	↑ 11.4%	935	768	↑ 21.7%	403	508	↓ -20.7%	2,259	2103	↑ 7.4%
Portsmouth	229	164	↑ 39.6%	250	216	↑ 15.7%	74	193	↓ -61.7%	553	573	↓ -3.5%
Reading	213	195	↑ 9.2%	274	193	↑ 42.0%	105	121	↓ -13.2%	592	509	↑ 16.3%
Slough	162	140	↑ 15.7%	157	137	↑ 14.6%	89	116	↓ -23.3%	408	393	↑ 3.8%
Southampton	383	278	↑ 37.8%	397	327	↑ 21.4%	152	215	↓ -29.3%	932	820	↑ 13.7%
Surrey	1,173	994	↑ 18.0%	1,596	1235	↑ 29.2%	760	861	↓ -11.7%	3,529	3090	↑ 14.2%
West Berkshire	264	260	↑ 1.5%	278	222	↑ 25.2%	83	126	↓ -34.1%	625	608	↑ 2.8%
West Sussex	972	851	↑ 14.2%	1,141	1044	↑ 9.3%	349	737	↓ -52.6%	2,462	2632	↓ -6.5%
Windsor and Maidenhead	126	122	↑ 3.3%	201	118	↑ 70.3%	66	90	↓ -26.7%	393	330	↑ 19.1%
Wokingham	768	759	↑ 1.2%	1,294	1026	↑ 26.1%	330	412	↓ -19.9%	2,392	2197	↑ 8.9%
Unknown	0	0	↑ 0%	0	0	↑ 0%	0	0	↑ 0%	0	0	↑ 0%
South East region	12,794	11,492	↑ 11.3%	16,723	12,520	↑ 26.6%	5,461	7,561	↓ -27.8%	33,978	31,573	↑ 7.6%

NB Totals are year to date & cumulative and are based on learners resident in the region by home postcode.

- Regionally starts for 16-18 year olds are 11.3% (+1,302) higher at period 10 than the same period in 2008/09
- Portsmouth (+39.6% / + 65), Southampton (+37.8% / + 105) & Medway (+32.3% / + 124) are showing the greatest increase for 16-18 starts for the same period last year - all in excess of a 30% increase.
- Milton Keynes (-9.4% / - 38), Isle of Wight (-2.5% / - 7) & Brighton & Hove (-0.9% / - 2) are the only Local Authorities with a decrease in 16-18 starts when comparing the same period in 2008/09.
- Reflecting reduced budgets 25+ starts are down by 32.6% (- 2,353).

Local Authority performance against Progress Check Indicators

16 to 18 local authority planned starts / Progress Check Indicator (PCI) analysis			
PCI Target (Green)	PCI Target (Amber/Green)	PCI Target (Amber)	Period 1 to 6 starts at upload 07 (PCI counts starts in periods 1 to 6)
155	134	123	115
223	194	178	136
680	589	542	496
715	619	570	501
2,333	2,022	1,860	1,844
217	188	173	170
1,735	1,503	1,383	1,184
393	341	313	337
391	339	312	237
844	731	673	665
186	161	148	150
190	165	152	153
143	124	114	121
314	272	250	270
944	818	753	710
299	259	238	177
996	863	794	616
122	106	97	91
721	625	575	495
0	0	0	0
11,601	10,063	9,248	8,468

NB Shaded colour shows level of PCI target achieved for this Local Authority Red = PCI not met

Green = Green PCI met Amber = Amber PCI met Plum = Amber/Green PCI met

- 5 Local Authorities at the period 07 upload have achieved the Amber PCI target for 16-18 Apprenticeship starts between Aug09 to Jan10 or periods 1 to 6.
- The remaining Local Authorities and the South East as a whole have not achieved the PCI targets

Local authority resident Apprenticeship completions with previous year comparison - Period 11 (June 2010 - 2009/10 academic year)

Local Authority	16-18			19-24			25+			All ages		
	2009/10 P11 ytd	2008/09 P11	0809 to 0910 % change	2009/10 P11 ytd	2008/09 P11	0809 to 0910 % change	2009/10 P11 ytd	2008/09 P11	0809 to 0910 % change	2009/10 P11 ytd	2008/09 P11	0809 to 0910 % change
Bracknell Forest	88	83	↑ 6.0%	110	83	↑ 32.5%	68	33	↑ 106.1%	266	199	↑ 33.7%
Brighton and Hove	96	130	↓ -26.2%	170	137	↑ 24.1%	95	35	↑ 171.4%	361	302	↑ 19.5%
Buckinghamshire	408	365	↑ 11.8%	472	341	↑ 38.4%	124	30	↑ 313.3%	1,004	736	↑ 36.4%
East Sussex	288	262	↑ 9.9%	410	325	↑ 26.2%	178	69	↑ 158.0%	876	656	↑ 33.5%
Hampshire	1,424	1426	↓ -0.1%	2,085	1765	↑ 18.1%	888	285	↑ 211.6%	4,397	3476	↑ 26.5%
Isle of Wight	155	161	↓ -3.7%	192	270	↓ -28.9%	140	84	↑ 66.7%	487	515	↓ -5.4%
Kent	980	745	↑ 31.5%	917	841	↑ 9.0%	497	228	↑ 118.0%	2,394	1814	↑ 32.0%
Medway	283	218	↑ 29.8%	374	284	↑ 31.7%	173	76	↑ 127.6%	830	578	↑ 43.6%
Milton Keynes	167	154	↑ 8.4%	174	212	↓ -17.9%	107	72	↑ 48.6%	448	438	↑ 2.3%
Oxfordshire	435	400	↑ 8.8%	474	443	↑ 7.0%	259	103	↑ 151.5%	1,168	946	↑ 23.5%
Portsmouth	126	91	↑ 38.5%	131	144	↓ -9.0%	77	31	↑ 148.4%	334	266	↑ 25.6%
Reading	85	70	↑ 21.4%	112	91	↑ 23.1%	54	30	↑ 80.0%	251	191	↑ 31.4%
Slough	75	72	↑ 4.2%	103	77	↑ 33.8%	49	46	↑ 6.5%	227	195	↑ 16.4%
Southampton	181	149	↑ 21.5%	196	175	↑ 12.0%	128	50	↑ 156.0%	505	374	↑ 35.0%
Surrey	565	478	↑ 18.2%	824	718	↑ 14.8%	494	237	↑ 108.4%	1,883	1433	↑ 31.4%
West Berkshire	148	141	↑ 5.0%	150	128	↑ 17.2%	85	43	↑ 97.7%	383	312	↑ 22.8%
West Sussex	493	470	↑ 4.9%	512	566	↑ 8.1%	340	111	↑ 206.3%	1,445	1147	↑ 26.0%
Windsor and Maidenhead	66	62	↑ 6.5%	122	79	↑ 54.4%	56	14	↑ 300.0%	244	155	↑ 57.4%
Wokingham	449	522	↓ -14.0%	840	523	↑ 60.6%	365	148	↑ 146.6%	1,654	1193	↑ 38.6%
Unknown	0	0	↑ 0%	0	0	↑ 0%	0	0	↑ 0%	0	0	↑ 0%
South East region	6,512	5,999	↑ 8.6%	8,468	7,202	↑ 17.6%	4,177	1,725	↑ 142.1%	19,157	14,926	↑ 28.3%

NB Totals are year to date & cumulative and are based on learners resident in the region by home postcode

- Completions uploaded at period 10 continue to be considerably higher than the same period last year with an overall increase of 31.3% (+4,076) from 13,038 at upload 10 in 2008/09 to 17,114 in 2009/10.
- 16-18 completions are up by 9.4% (+ 498). 19-24 completions have increased by 18.3% (+1,161)
- Completions for Adult Apprenticeships have increased significantly since the same period last year largely due to the increased demand on this still relatively new strand

What are the Apprenticeship success rates for those who are resident in South East local Authorities? (2009/10 - May 2010 period 10)

Local Authority	16-18	19-24	25+
Bracknell Forest	74.4%	72.1%	75.0%
Brighton and Hove	61.0%	66.3%	63.5%
Buckinghamshire	73.4%	72.5%	69.8%
East Sussex	60.3%	70.3%	69.2%
Hampshire	74.2%	77.4%	77.1%
Isle of Wight	66.3%	74.3%	82.4%
Kent	70.7%	72.0%	72.9%
Medway	79.1%	85.7%	78.4%
Milton Keynes	62.9%	69.4%	65.8%
Oxfordshire	75.3%	74.6%	68.5%
Portsmouth	75.2%	71.4%	66.1%
Reading	67.3%	71.3%	62.6%
Slough	72.4%	74.8%	66.7%
Southampton	66.7%	67.1%	79.0%
Surrey	68.2%	73.3%	74.5%
West Berkshire	71.9%	73.5%	80.0%
West Sussex	65.8%	72.1%	71.6%
Windsor and Maidenhead	66.7%	76.7%	73.2%
Wokingham	75.9%	85.0%	85.7%
South East region	70.9%	74.6%	73.7%
National	70.3%	73.0%	72.6%

NB This success rate is based on learner residency from their home postcode

Blue indicates on or above regional average - red below regional average