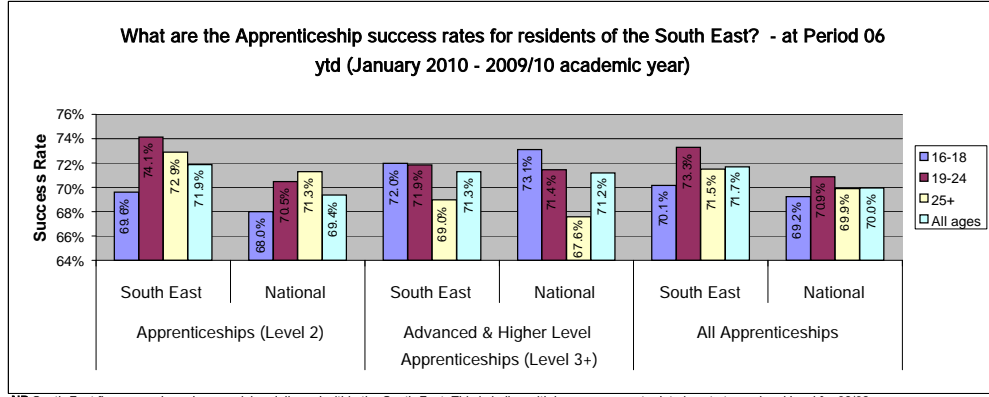
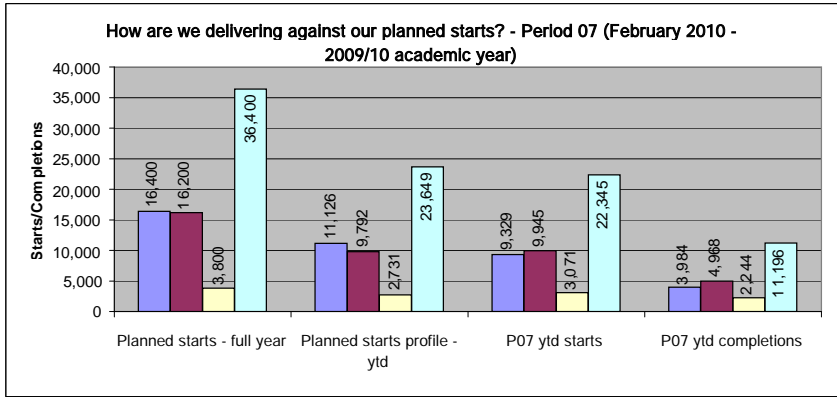


South East and National Apprenticeship Service summary report - Period 07 (February 2010 - 2009/10 academic year) - EXTERNAL



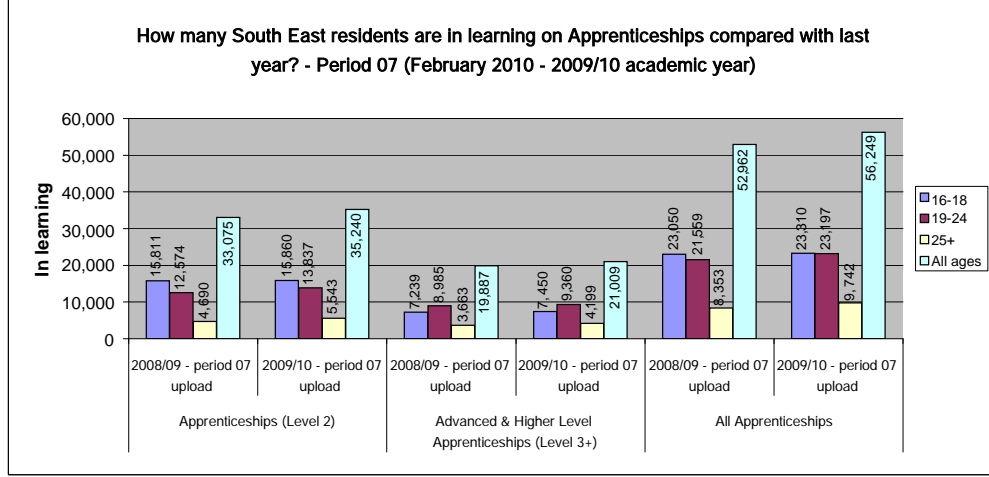
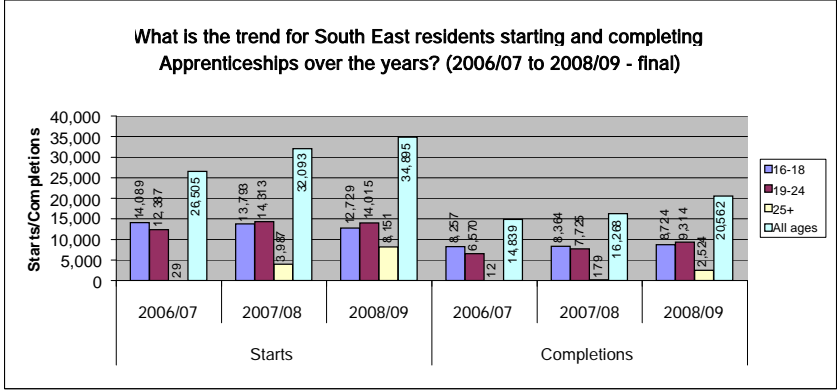
Age band	Planned Starts - ytd	Planned Starts profile - ytd	P07 ytd starts	% Delivery towards ytd Starts profile	towards full year Planned Starts	P07 ytd completions	Upload 07 starts 0809	0809 to 0910 change
16-18	16,400	11,126	9,329	83.8%	56.9%	3,984	8,786	6.2%
19-24	16,200	9,792	9,945	101.6%	61.4%	4,968	8,222	21.0%
25+	3,800	2,731	3,071	112.5%	80.8%	2,244	5,067	-39.4%
All ages	36,400	23,649	22,345	94.5%	61.4%	11,196	22,075	1.2%

NB South East figures are based on provision delivered within the South East. This is in line with how success rate data is cut at a regional level for 08/09. Final period 15 success rates for 2008/09 showing - there is currently no success data available for 09/10

- The South East overall (level 2 & 3 combined) exceeds the National average Apprenticeship success rate across all age bands and all levels in 2008/09
- Level 2 Apprenticeships were 0.5%, 1.9% & 2.4% higher for 16-18, 19-24 & 25+ respectively in the South East than the National average.
- Level 3 Apprenticeships were 2.0%, 0.2% & 3.5% higher for 16-18, 19-24 & 25+ respectively in the South East than the National average.

NB Totals are year to date and are based on learners resident within the South East. There is no completions target for 09/10

- 16-18 starts are 6.2% (+543) higher at period 07 this year compared to the same upload period last year
- 16-18 starts are at 83.8% of the profiled P07 starts target
- 25+ starts are down by 39.4% (-1,996) compared to P07 2008/09 upload and 19-24 starts are up by 21.0% (+1,723) when comparing the same period



Starts for those aged 16-18 have fallen by 7.7% between 2007/08 (13,793) and 2008/09 (12,729 - final data). There has also been a reduction in adults aged 19-24 starting an Apprenticeship, within the same period, down by 2.1%. There has been significant demand for 25+ Apprenticeships with a 104.4% (+4,164) increase in starts from 2007/08 (3,987) to 2008/09 (8,151). The overall completion rate has increased year on year by 38.6% from 14,839 in 2006/07 to 20,562 in 2008/09

There are 6.2% (+3,287) more South East resident learners in learning on Apprenticeships at period 07 in 2009/10 than the same period in 2008/09. 19-24 has risen by 7.6% (+1,638) & 25+ significantly by 16.6% (+1,389). 16-18 year olds in learning on all Apprenticeships has increased by 1.1% (+ 260) since the same period in 2008/09 (23,050 to 23,310)

South East and National Apprenticeship Service summary report - Period 07 (February 2010 - 2009/10 academic year) - EXTERNAL

Local authority resident Apprenticeship starts with previous year comparison - Period 07 (February 2010 - 2009/10 academic year)

Local Authority	16 to 18			19 to 24			25+			All ages		
	2009/10 P07 ytd	2008/09 P07	0809 to 0910 % change	2009/10 P07 ytd	2008/09 P07	0809 to 0910 % change	2009/10 P07 ytd	2008/09 P07	0809 to 0910 % change	2009/10 P07 ytd	2008/09 P07	0809 to 0910 % change
Bracknell Forest	133	127	↑ 4.7%	144	98	↑ 46.9%	45	67	↓ -32.8%	322	292	↑ 10.3%
Brighton and Hove	144	179	↓ -19.6%	186	208	↓ -10.6%	66	143	↓ -53.8%	396	530	↓ -25.3%
Buckinghamshire	557	542	↑ 2.8%	539	431	↑ 25.1%	112	192	↓ -41.7%	1,208	1165	↑ 3.7%
East Sussex	542	547	↓ -0.9%	438	523	↓ -16.3%	114	280	↓ -59.3%	1,094	1350	↓ -19.0%
Hampshire	2,019	1703	↑ 18.6%	2,581	1674	↑ 54.2%	814	1017	↓ -20.0%	5,414	4394	↑ 23.2%
Isle of Wight	183	205	↓ -10.7%	229	224	↑ 2.2%	16	139	↓ -88.5%	428	568	↓ -24.6%
Kent	1,253	1257	↓ -0.3%	1,156	970	↑ 19.2%	360	655	↓ -45.0%	2,769	2882	↓ -3.9%
Medway	366	290	↑ 26.2%	412	297	↑ 38.7%	99	166	↓ -40.4%	877	753	↑ 16.5%
Milton Keynes	278	330	↓ -15.8%	240	237	↑ 1.3%	72	149	↓ -51.7%	590	716	↓ -17.6%
Oxfordshire	750	663	↑ 13.1%	529	532	↑ 18.2%	236	352	↓ -33.0%	1,615	1547	↑ 4.4%
Portsmouth	166	130	↑ 27.7%	157	136	↑ 15.4%	41	114	↓ -64.0%	364	380	↓ -4.2%
Reading	171	166	↑ 3.0%	180	134	↑ 34.3%	61	72	↓ -15.3%	412	372	↑ 10.8%
Slough	125	113	↑ 10.6%	91	89	↑ 2.2%	51	78	↓ -34.6%	267	280	↓ -4.6%
Southampton	313	229	↑ 36.7%	234	248	↓ -5.6%	70	169	↓ -58.6%	617	646	↓ -4.5%
Surrey	782	714	↑ 9.5%	900	776	↑ 16.0%	387	539	↓ -28.2%	2,069	2029	↑ 2.0%
West Berkshire	197	217	↓ -9.2%	179	154	↑ 16.2%	50	83	↓ -39.8%	426	454	↓ -6.2%
West Sussex	662	687	↓ -3.6%	751	734	↑ 2.3%	191	509	↓ -62.5%	1,604	1930	↓ -16.9%
Windsor and Maidenhead	104	99	↑ 5.1%	129	74	↑ 74.3%	45	69	↓ -34.8%	278	242	↑ 14.9%
Wokingham	584	588	↓ -0.7%	770	683	↑ 12.7%	241	274	↓ -12.0%	1,595	1545	↑ 3.2%
Unknown	0	0	↑ 0%	0	0	↑ 0%	0	0	↑ 0%	0	0	↑ 0%
South East region	9,329	8,786	↑ 6.2%	9,945	8,222	↑ 21.0%	3,071	5,067	↓ -39.4%	22,345	22,075	↑ 1.2%

NB Totals are year to date & cumulative and are based on learners resident in the region by home postcode.

- Regionally starts for 16-18 year olds are 6.2% (+543) higher at period 07 than the same period in 2008/09.
- Southampton (+36.7%), Portsmouth (+27.7%) & Medway (+26.2%) are showing the greatest increase for 16-18 starts for the same period last year - all in excess of a 20% increase.
- Brighton & Hove (-19.6%), Milton Keynes (-15.8%) & Isle of Wight (-10.7%) are showing the greatest decrease for 16-18 starts when comparing the same period in 2008/09
- Reflecting reduced budgets 25+ starts are down by 39.4% (-1,996).

Local Authority performance against Progress Check Indicators

16 to 18 local authority planned starts / Progress Check Indicator (PCI) analysis			
PCI Target (Green)	PCI Target (Amber/Green)	PCI Target (Amber)	Period 1 to 6 starts (PCI counts starts in periods 1 to 6)
155	134	123	115
223	194	178	136
680	589	542	496
715	619	570	501
2,333	2,022	1,860	1,844
217	188	173	170
1,735	1,503	1,383	1,184
393	341	313	337
391	339	312	237
844	731	673	665
186	161	148	150
190	165	152	153
143	124	114	121
314	272	250	270
944	818	753	710
299	259	238	177
996	863	794	616
122	106	97	91
721	625	575	495
0	0	0	0
11,601	10,063	9,248	8,468

NB Shaded colour shows level of PCI target achieved for this Local Authority Red = PCI not met

Green = Green PCI met Amber = Amber PCI met Plum = Amber/Green PCI met

- 5 Local Authorities at the period 07 upload have achieved the Amber PCI target for 16-18 Apprenticeship starts between Aug09 to Jan10 or periods 1 to 6.
- The remaining Local Authorities and the South East as a whole have not achieved the PCI targets

Local authority resident Apprenticeship completions with previous year comparison - Period 07 (February 2010 - 2009/10 academic year)

Local Authority	16-18			19-24			25+			All ages		
	2009/10 P07 ytd	2008/09 P07	0809 to 0910 % change	2009/10 P07 ytd	2008/09 P07	0809 to 0910 % change	2009/10 P07 ytd	2008/09 P07	0809 to 0910 % change	2009/10 P07 ytd	2008/09 P07	0809 to 0910 % change
Bracknell Forest	53	48	↑ 10.4%	56	48	↑ 16.7%	23	5	↑ 360.0%	132	101	↑ 30.7%
Brighton and Hove	59	94	↓ -37.2%	88	82	↑ 7.3%	58	18	↑ 222.2%	205	194	↑ 5.7%
Buckinghamshire	265	220	↑ 20.5%	264	209	↑ 26.3%	74	10	↑ 640.0%	603	439	↑ 37.4%
East Sussex	178	146	↑ 21.9%	255	173	↑ 47.4%	82	19	↑ 331.6%	515	338	↑ 52.4%
Hampshire	879	829	↑ 6.0%	1,263	1067	↑ 18.4%	472	109	↑ 333.0%	2,614	2005	↑ 30.4%
Isle of Wight	90	98	↓ -8.2%	128	185	↓ -30.8%	82	42	↑ 95.2%	300	325	↓ -7.7%
Kent	600	423	↑ 41.8%	529	475	↑ 11.4%	271	89	↑ 204.5%	1,400	987	↑ 41.8%
Medway	171	143	↑ 19.6%	218	179	↑ 21.8%	107	44	↑ 143.2%	496	366	↑ 35.5%
Milton Keynes	106	98	↑ 8.2%	114	118	↓ -3.4%	56	24	↑ 133.3%	276	240	↑ 15.0%
Oxfordshire	287	227	↑ 26.4%	293	271	↑ 8.1%	156	37	↑ 321.6%	736	535	↑ 37.6%
Portsmouth	80	50	↑ 60.0%	72	90	↓ -20.0%	33	7	↑ 266.7%	185	149	↑ 24.2%
Reading	60	44	↑ 36.4%	59	49	↑ 20.4%	31	12	↑ 158.3%	150	105	↑ 42.9%
Slough	50	47	↑ 6.4%	64	46	↑ 39.1%	25	20	↑ 25.0%	139	113	↑ 23.0%
Southampton	124	92	↑ 34.8%	112	94	↑ 19.1%	59	25	↑ 136.0%	295	211	↑ 39.8%
Surrey	309	282	↑ 9.6%	477	413	↑ 15.5%	262	87	↑ 201.1%	1,048	782	↑ 34.0%
West Berkshire	101	79	↑ 27.8%	86	71	↑ 21.1%	49	25	↑ 96.0%	236	175	↑ 34.9%
West Sussex	273	277	↓ -1.4%	343	313	↑ 9.6%	177	37	↑ 378.4%	793	627	↑ 26.5%
Windsor and Maidenhead	42	33	↑ 27.3%	71	52	↑ 36.5%	28	7	↑ 300.0%	141	92	↑ 53.3%
Wokingham	257	301	↓ -14.6%	476	277	↑ 71.8%	199	64	↑ 210.9%	932	642	↑ 45.2%
Unknown	0	0	↑ 0%	0	0	↑ 0%	0	0	↑ 0%	0	0	↑ 0%
South East region	3,984	3,531	↑ 12.8%	4,968	4,212	↑ 17.9%	2,244	683	↑ 228.6%	11,196	8,426	↑ 32.9%

NB Totals are year to date & cumulative and are based on learners resident in the region by home postcode

- Completions uploaded at period 07 continue to be considerably higher than the same period last year with an overall increase of 32.9% (+2,770) from 8,426 at upload 07 in 2008/09 to 11,196 in 2009/10.
- 16-18 completions are up by 12.8% (+453) and for 19-24 by 17.9% (+756)
- Completions for Adult Apprenticeships have increased significantly since the same period last year largely due to the increased demand on this still relatively new strand

What are the Apprenticeship success rates for those who are resident in South East local Authorities? (2009/10 - period 06)

Local Authority	16-18	19-24	25+
Bracknell Forest	73.7%	73.1%	56.4%
Brighton and Hove	59.4%	58.9%	62.3%
Buckinghamshire	69.7%	70.0%	66.7%
East Sussex	60.3%	68.6%	57.5%
Hampshire	73.0%	75.2%	75.2%
Isle of Wight	66.7%	75.9%	82.4%
Kent	69.2%	73.3%	72.8%
Medway	77.0%	83.8%	76.2%
Milton Keynes	64.7%	64.4%	58.2%
Oxfordshire	73.4%	73.7%	68.6%
Portsmouth	74.0%	73.6%	76.7%
Reading	79.2%	76.9%	56.1%
Slough	72.3%	72.4%	73.2%
Southampton	68.2%	59.6%	66.7%
Surrey	66.5%	73.5%	72.0%
West Berkshire	75.0%	73.9%	84.1%
West Sussex	65.4%	68.0%	69.6%
Windsor and Maidenhead	62.3%	70.7%	74.2%
Wokingham	78.9%	84.8%	85.0%
South East region	70.1%	73.3%	71.6%
England	69.2%	70.9%	69.9%

NB This success rate is based on learner residency from their home postcode

Blue indicates on or above regional average - red below regional average