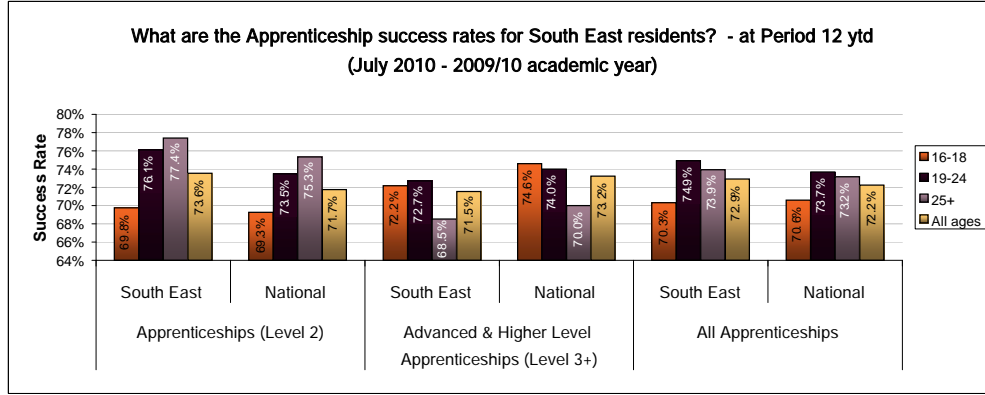
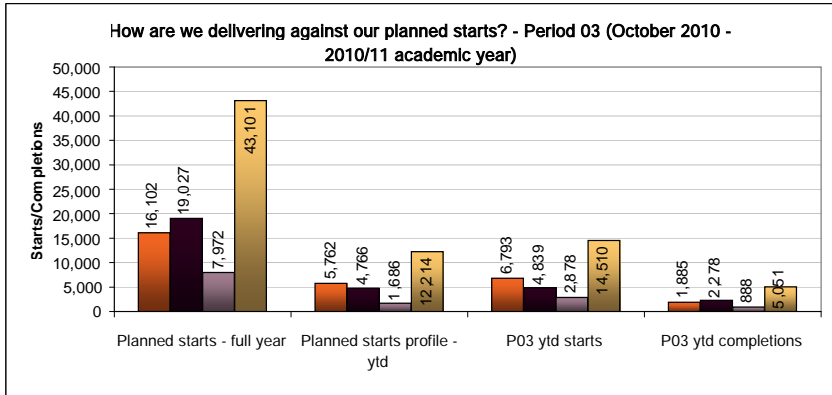


# South East - National Apprenticeship Service summary report - Period 03 (October 2010 - 2010/11 academic year) - EXTERNAL



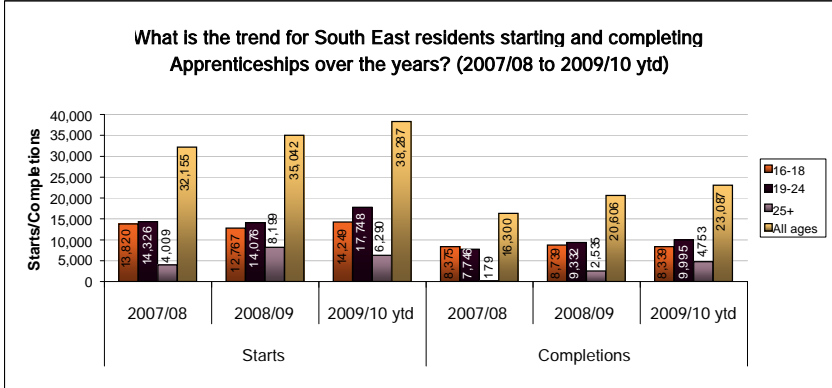
NB Period 01 success rates for 2010/11 currently unavailable

Age band	Planned Starts - ytd	Planned Starts profile - ytd	P03 ytd starts	% delivery ytd Starts profile	% delivery full year Planned Starts	P03 ytd completions	Upload P03 starts 10/11	09/10/10 10/11 change
16-18	16,102	5,762	6,793	117.9%	42.2%	1,885	5,099	33.2%
19-24	19,027	4,766	4,839	101.5%	25.4%	2,278	4,446	8.8%
25+	7,972	1,686	2,878	170.7%	36.1%	888	1,330	116.4%
All ages	43,101	12,214	14,510	118.8%	33.7%	5,051	10,875	33.4%

- Level 2 Apprenticeships are 0.5%, 2.6% & 2.1% higher for 16-18, 19-24 & 25+ respectively in the South East than the National average.  
 - Level 3 Apprenticeships are 2.4%, 1.3% & 1.5% lower for 16-18, 19-24 & 25+ respectively in the South East than the National average  
 - Overall for all levels the South East is 0.3% lower than National average for 16-18. 19-24 & 25+ are 1.2% and 0.8% higher in the South East than the National average.

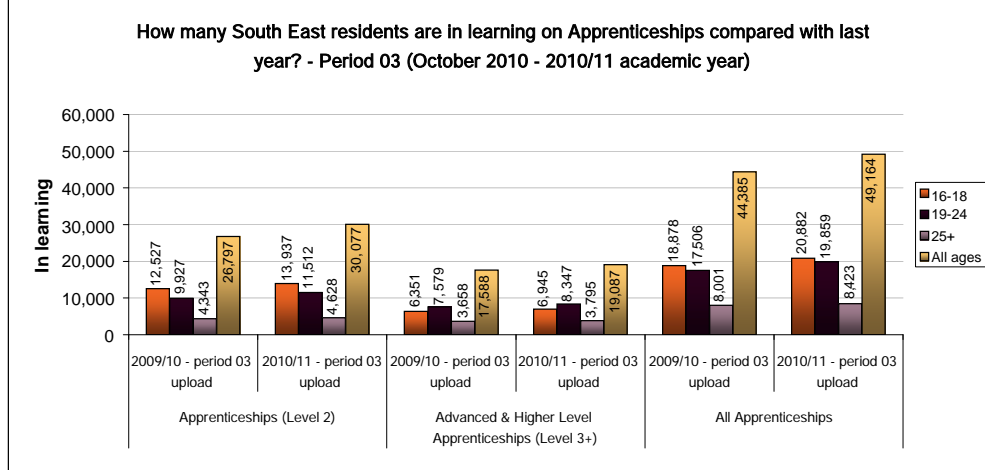
NB Planned starts profile derived from proportion of SE resident starts delivery by period and age band in 2009/10. These proportions have been applied to the 2010/11 target to give a monthly profile.

- 16-18 starts are 33.2% (+ 1,694 ) higher at period 03 this year compared to the same upload period last year.  
 - 16-18 starts are at 117.9% of the year to date starts delivery profile for period 03. Although early in the year this indicates the region is on track towards achieving this target for 16-18.  
 - 19-24 starts are 8.8% (+ 393) higher at period 03 compared with the same upload period last year.  
 - 25+ starts are 116.4% (+ 1,548) higher at period 03 compared with the same upload period last year.



NB 2009/10 figures are still not complete with the final position due towards the end of November 2010.

- Starts for those aged 16-18 have increased by 11.6% (+ 1,482) between 2008/09 (12,767) and 2009/10 ytd (14,249). It is expected that this increase will be more pronounced when the final 2009/10 picture is known in November 2010.  
 - 19-24 starts have increased by 26.1% (+ 3,672) in the same period.



- There are 10.8% (+ 4,779) more South East resident learners' who have been in learning on Apprenticeships cumulative to period 03 in 2010/11 than the same period in 2009/10.  
 - 16-18 year olds in learning on all Apprenticeships at period 03 has increased by 10.6% (+ 2,004).  
 - 19-24 has risen by 13.4% (+ 2,353) & 25+ is higher by 5.3% (+ 422)

## South East - National Apprenticeship Service summary report - Period 03 (October 2010 - 2010/11 academic year) - EXTERNAL

### Local authority resident Apprenticeship starts with previous year comparison - Period 03 (October 2010 - 2010/11 academic year)

	16 to 18			19 to 24			25+			All ages		
	2010/11 P03 ytd	2009/10 P03	09/10 to 10/11 % change	2010/11 P03 ytd	2009/10 P03	09/10 to 10/11 % change	2010/11 P03 ytd	2009/10 P03	09/10 to 10/11 % change	2010/11 P03 ytd	2009/10 P03	09/10 to 10/11 % change
<b>South East Local Authority</b>												
Bracknell Forest	117	90	↑ 30.0%	74	75	↓ -1.3%	41	18	↑ 127.8%	232	183	↑ 26.8%
Brighton and Hove	125	80	↑ 56.3%	145	59	↑ 145.8%	102	14	↑ 628.6%	372	153	↑ 143.1%
Buckinghamshire	392	317	↑ 23.7%	211	211	↔ 0.0%	116	33	↑ 251.5%	719	561	↑ 28.2%
East Sussex	386	232	↑ 66.4%	302	159	↑ 89.9%	125	49	↑ 155.1%	813	440	↑ 84.8%
Hampshire	1,262	1,029	↑ 22.6%	957	1,063	↓ -10.0%	649	335	↑ 93.7%	2,868	2,427	↑ 18.2%
Isle of Wight	170	113	↑ 50.4%	112	103	↑ 8.7%	105	12	↑ 775.0%	387	228	↑ 69.7%
Kent	992	682	↑ 45.5%	707	492	↑ 43.7%	380	122	↑ 211.5%	2,079	1,296	↑ 60.4%
Medway	241	164	↑ 47.0%	212	181	↑ 17.1%	96	55	↑ 47.7%	549	410	↑ 33.9%
Milton Keynes	212	151	↑ 40.4%	127	113	↑ 12.4%	74	39	↑ 89.7%	413	303	↑ 36.3%
Oxfordshire	556	473	↑ 17.5%	359	290	↑ 23.8%	189	57	↑ 182.1%	1,104	830	↑ 33.0%
Portsmouth	123	90	↑ 36.7%	86	75	↑ 14.7%	72	24	↑ 200.0%	281	189	↑ 48.7%
Reading	235	107	↑ 119.6%	113	81	↑ 39.5%	72	22	↑ 227.3%	420	210	↑ 100.0%
Slough	113	89	↑ 27.0%	41	35	↑ 17.1%	34	14	↑ 142.9%	188	138	↑ 36.2%
Southampton	209	143	↑ 46.2%	156	87	↑ 79.3%	93	37	↑ 151.4%	458	267	↑ 71.5%
Surrey	567	423	↑ 34.0%	414	403	↑ 2.7%	305	201	↑ 51.7%	1,286	1,027	↑ 25.2%
West Berkshire	174	108	↑ 61.1%	89	105	↓ -15.2%	42	18	↑ 133.3%	305	231	↑ 32.0%
West Sussex	505	400	↑ 26.3%	458	396	↑ 15.7%	252	93	↑ 171.0%	1,215	889	↑ 36.7%
Windsor and Maidenhead	72	63	↑ 14.3%	59	64	↓ -7.8%	36	26	↑ 38.5%	167	153	↑ 9.2%
Wokingham	342	345	↓ -0.9%	217	454	↓ -52.2%	95	141	↓ -32.6%	554	940	↓ -30.4%
Unknown	0	0	↔ 0%	0	0	↔ 0%	0	0	↔ 0%	0	0	↔ 0%
<b>South East region</b>	<b>6,793</b>	<b>6,099</b>	<b>↑ 33.2%</b>	<b>4,839</b>	<b>4,446</b>	<b>↑ 8.8%</b>	<b>2,878</b>	<b>1,330</b>	<b>↑ 116.4%</b>	<b>14,510</b>	<b>10,875</b>	<b>↑ 33.4%</b>

NB Totals are year to date & cumulative and are based on learners resident in the region by home postcode.

- Regionally starts for 16-18 year olds are 33.2% (+ 1,694) higher at period 03 than the same period in 2009/10.
- Reading (+ 119.6% / + 128), East Sussex (+ 66.4% / + 154) & West Berkshire (+ 61.1% / + 66) are showing the greatest % increase for 16-18 starts compared to the same period last year.
- The only Local Authority showing a decrease in starts when compared to last year is Wokingham (- 0.9% / - 3)

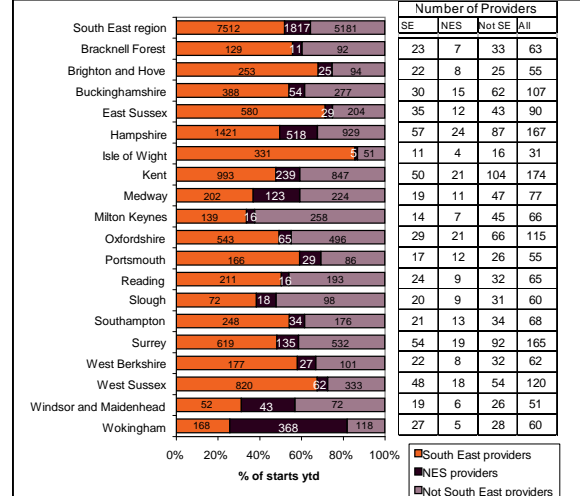
### Local authority resident Apprenticeship completions with previous year comparison - Period 03 (October 2010 - 2010/11 academic year)

	16-18			19-24			25+			All ages		
	2010/11 P03 ytd	2009/10 P03	09/10 to 10/11 % change	2010/11 P03 ytd	2009/10 P03	09/10 to 10/11 % change	2010/11 P03 ytd	2009/10 P03	09/10 to 10/11 % change	2010/11 P03 ytd	2009/10 P03	09/10 to 10/11 % change
<b>South East Local Authority</b>												
Bracknell Forest	18	12	↑ 50.0%	17	16	↑ 6.3%	9	12	↓ -25.0%	44	40	↑ 10.0%
Brighton and Hove	33	23	↑ 43.5%	28	44	↓ -36.4%	17	25	↓ -32.0%	78	92	↓ -15.2%
Buckinghamshire	154	107	↑ 43.9%	115	134	↓ -14.2%	31	32	↓ -3.1%	300	273	↑ 9.9%
East Sussex	84	82	↑ 2.4%	76	103	↓ -26.2%	29	36	↓ -19.4%	189	221	↓ -14.5%
Hampshire	374	342	↑ 9.4%	570	495	↑ 15.2%	238	177	↑ 34.5%	1,182	1,014	↑ 16.6%
Isle of Wight	46	39	↑ 17.9%	58	57	↑ 1.8%	14	39	↓ -64.1%	118	135	↓ -12.6%
Kent	283	263	↑ 7.6%	255	232	↑ 9.9%	102	118	↓ -13.6%	640	613	↑ 4.4%
Medway	111	69	↑ 60.9%	121	88	↑ 37.5%	15	39	↓ -61.5%	247	196	↑ 26.0%
Milton Keynes	46	43	↑ 7.0%	65	46	↑ 41.3%	36	16	↑ 125.0%	147	105	↑ 40.0%
Oxfordshire	135	127	↑ 6.3%	155	135	↑ 14.8%	41	59	↓ -40.6%	331	331	↔ 0.0%
Portsmouth	44	30	↑ 46.7%	35	38	↓ -7.9%	16	13	↑ 23.1%	95	81	↑ 17.3%
Reading	26	15	↑ 73.3%	30	24	↑ 25.0%	10	16	↓ -37.5%	66	55	↑ 20.0%
Slough	32	20	↑ 60.0%	23	24	↓ -4.2%	15	9	↑ 66.7%	70	53	↑ 32.1%
Southampton	56	25	↑ 124.0%	55	33	↑ 66.7%	44	18	↑ 144.4%	155	76	↑ 103.9%
Surrey	143	109	↑ 31.2%	216	165	↑ 30.9%	99	103	↓ -3.9%	458	377	↑ 21.5%
West Berkshire	34	37	↓ -8.1%	48	37	↑ 29.7%	11	25	↓ -56.0%	93	99	↓ -6.1%
West Sussex	131	99	↑ 32.3%	158	146	↑ 8.2%	74	70	↑ 5.7%	363	315	↑ 15.2%
Windsor and Maidenhead	13	12	↑ 8.3%	28	24	↑ 16.7%	15	10	↑ 50.0%	56	46	↑ 21.7%
Wokingham	122	76	↑ 60.5%	225	204	↑ 10.3%	72	53	↑ 14.3%	419	343	↑ 22.2%
Unknown	0	0	↔ 0%	0	0	↔ 0%	0	0	↔ 0%	0	0	↔ 0%
<b>South East region</b>	<b>1,885</b>	<b>1,530</b>	<b>↑ 23.2%</b>	<b>2,278</b>	<b>2,045</b>	<b>↑ 11.4%</b>	<b>888</b>	<b>890</b>	<b>↓ -0.2%</b>	<b>5,051</b>	<b>4,465</b>	<b>↑ 13.1%</b>

NB Totals are year to date & cumulative and are based on learners resident in the region by home postcode.

- Completions uploaded at period 03 are higher than the same period last year with an overall increase of 13.1% (+ 586) from 4,465 at upload 03 in 2009/10 to 5,051 in 2010/11.
- 16-18 completions are up by 23.2% (+ 355). 19-24 completions have increased by 11.4% (+ 233)

### Who funds South East residents? Period 03 (October 2010 - 2010/11 academic year)



- Bars show proportion of starts funded by South East, NES & not South East managed providers. Numbers in bars show actual starts for all ages.

- Table is a count of providers in each category with starts.
- Just over half of all new starts (7,512 / 51.8%) in 2009/10 are funded by the South East with (1,817 / 12.5%) NES & (5,181 / 35.7%) funded by other regions

### What are the Apprenticeship success rates for those who are resident in South East local Authorities? (2009/10 - July 2010 period 12 ytd)

Local Authority	16-18	19-24	25+
Bracknell Forest	73.2%	69.6%	76.7%
Brighton and Hove	60.4%	68.1%	65.9%
Buckinghamshire	72.1%	71.8%	71.4%
East Sussex	64.3%	71.4%	68.5%
Hampshire	73.3%	78.4%	77.7%
Isle of Wight	61.4%	72.8%	81.0%
Kent	70.6%	73.1%	72.2%
Medway	79.4%	84.6%	77.0%
Milton Keynes	63.0%	70.3%	66.7%
Oxfordshire	72.4%	74.1%	70.5%
Portsmouth	76.9%	73.2%	67.2%
Reading	63.4%	69.7%	64.2%
Slough	73.4%	72.6%	70.9%
Southampton	66.7%	68.0%	78.0%
Surrey	68.6%	74.1%	74.6%
West Berkshire	67.9%	71.8%	80.5%
West Sussex	66.2%	71.3%	71.9%
Windsor and Maidenhead	66.4%	76.9%	72.1%
Wokingham	75.1%	83.4%	85.3%
<b>South East region</b>	<b>70.3%</b>	<b>74.9%</b>	<b>73.9%</b>
<b>National</b>	<b>70.6%</b>	<b>73.7%</b>	<b>73.2%</b>

NB Success rates for 2010/11 currently unavailable

Blue indicates on or above regional average - red below regional average